

INNOLUX DISPLAY CORPORATION LCD MODULE SPECIFICATION

Customer: _____

Model Name: AT080TN03 V.6

SPEC NO.: A080-03-TT-61

Date: 2006/04/12

Version: 01

Preliminary Specification

Final Specification

Option
<input checked="" type="checkbox"/> AT080TN03 V.1 LCM
<input checked="" type="checkbox"/> LED Driver Board (102.7*10.2mm)
<input type="checkbox"/> LED Driver Board (91*11mm)
<input type="checkbox"/> LED Driver Board (123*11.86mm)
<input type="checkbox"/> LED Driver Board (32.5*25mm)
<input type="checkbox"/> Touch Panel
<input checked="" type="checkbox"/> T-CON Board
<input type="checkbox"/> System Integration Board

For Customer's Acceptance

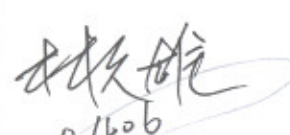
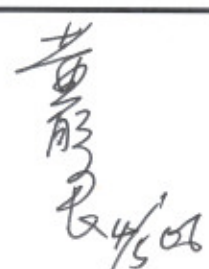
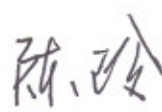
Approved by	Comment

INNOLUX DISPLAY CORPORATION

LCD MODULE SPECIFICATION

Model Name: AT080TN03 V.1
SPEC NO.: A080-03-TT-11
Date: 2006/04/03
Version: 01

- Preliminary Specification
 Final Specification

Approved by	Reviewed by	Prepared by
 0406 106 (1011)	 4/5/06	 4/3/06

Record of Revision

Version	Revise Date	Page	Content
1	2006/04/03		Final specification.

Contents

1. General Specifications	1
2. Pin Assignment	2
2.1. TFT LCD Panel Driving Section	2
2.2. Backlight Unit Section	6
3. Operation Specifications	7
3.1. Absolute Maximum Rating	7
3.1.1. Typical Operation Conditions	8
3.1.2. Current Consumption	9
3.1.3. Backlight Driving Conditions	9
3.2. Timing Characteristics	10
3.2.1. Timing Conditions	10
3.2.2. Timing Diagram	11
4. Optical Specifications	18
5. Reliability Test Items	22
6. General Precautions	23
6.1. Safety	23
6.2. Handling	23
6.3. Static Electricity	23
6.4. Storage	23
6.5. Cleaning	23
7. Mechanical Drawing	24
8. Package Drawing	25
8.1. Packaging Material Table	25
8.2. Packaging Quantity	25
8.3. Packaging Drawing	26

1. General Specifications

No.	Item	Specification	Remark
1	LCD size	8.0 inch(Diagonal)	
2	Driver element	a-Si TFT active matrix	
3	Resolution	800X3(RGB)X480	
4	Display mode	Normally White, Transmissive	
5	Dot pitch	0.0736(W)X0.2070(H) mm	
6	Active area	176.64(W)X99.36(H) mm	
7	Module size	192.8(W)X116.9(H)X6.4(D) mm	Note 1
8	Surface treatment	Anti-Glare	
9	Color arrangement	RGB-stripe	
10	Interface	Digital	
11	Backlight Power consumption	2.376W (Typ.)	
12	Panel Power consumption	268mW (Typ.)	
13	Weight	241.7g	

Note 1: Refer to Mechanical Drawing.

2. Pin Assignment

2.1. TFT LCD Panel Driving Section

Pin No.	Symbol	I/O	Function	Remark
1	POL	I	Polarity selection	
2	STVD	I/O	Vertical start pulse input when U/D= H	Note 1
3	OEV	I	Output enable	
4	CKV	I	Vertical clock	
5	STVU	I/O	Vertical start pulse input when U/D= L	Note 1
6	GND	P	Power ground	
7	EDGSL	I	Select rising edge or falling edge	
8	V _{CC}	P	Power supply for digital circuit	
9	V ₉	I	Gamma voltage level 9	
10	V _{GL}	P	Gate OFF voltage	
11	V ₂	I	Gamma voltage level 2	
12	V _{GH}	P	Gate ON voltage	
13	V ₆	I	Gamma voltage level 6	
14	U/D	I	Up/down selection	Note 1,2
15	V _{COM}	I	Common voltage	
16	GND	P	Power ground	
17	AV _{DD}	P	Power supply for analog circuit	
18	V ₁₄	I	Gamma voltage level 14	
19	V ₁₁	I	Gamma voltage level 11	

20	V8	I	Gamma voltage level 8	
21	V5	I	Gamma voltage level 5	
22	V3	I	Gamma voltage level 3	
23	GND	P	Power ground	
24	R5	I	Red data(MSB)	
25	R4	I	Red data	
26	R3	I	Red data	
27	R2	I	Red data	
28	R1	I	Red data	
29	R0	I	Red data(LSB)	
30	GND	P	Power ground	
31	GND	P	Power ground	
32	G5	I	Green data(MSB)	
33	G4	I	Green data	
34	G3	I	Green data	
35	G2	I	Green data	
36	G1	I	Green data	
37	G0	I	Green data(LSB)	
38	STHL	I/O	Horizontal start pulse input when R/L = H	Note 1
39	INV	I	Control signal are inverted or not	
40	GND	I	Power ground	
41	DCLK	I	Sample clock	
42	V _{CC}	P	Voltage for digital circuit	
43	STHR	I/O	Horizontal start pulse input when R/L = L	Note 1
44	LD	I	Latches the polarity of outputs and switches the new data to outputs	

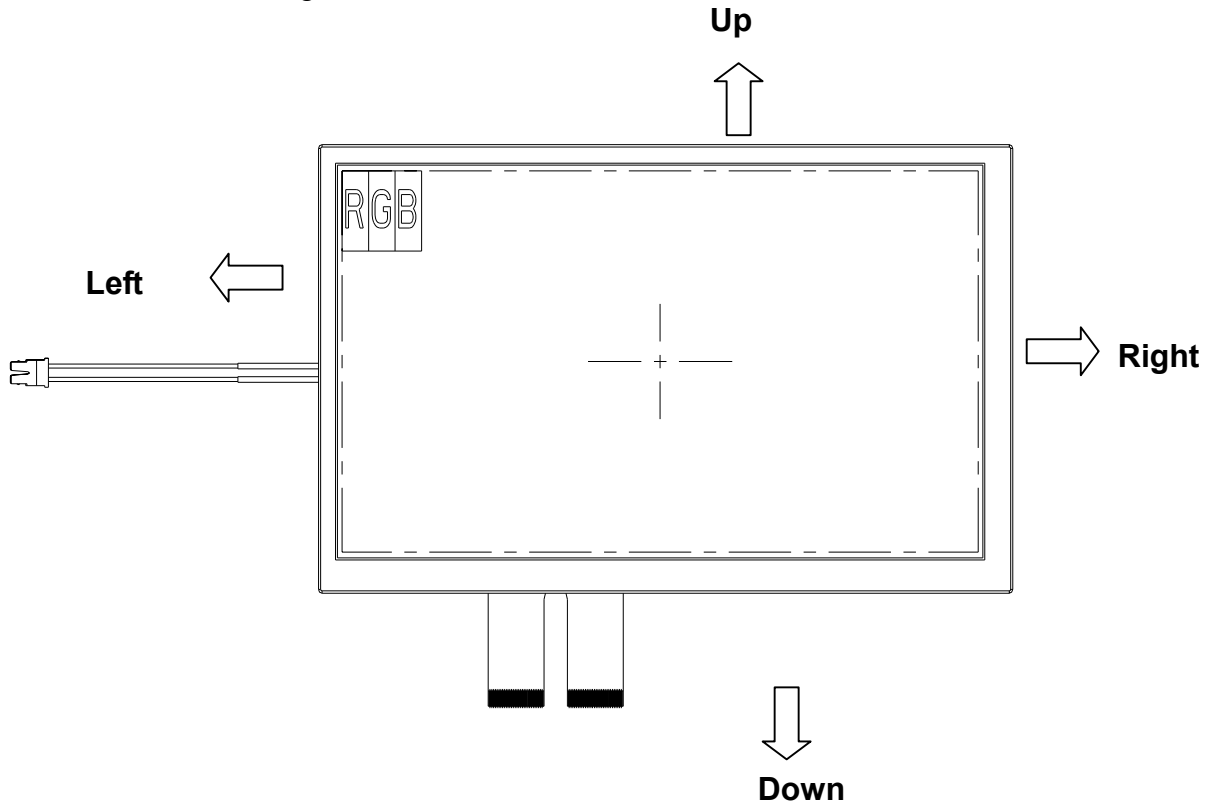
45	B5	I	Blue data (MSB)	
46	B4	I	Blue data	
47	B3	I	Blue data	
48	B2	I	Blue data	
49	B1	I	Blue data	
50	B0	I	Blue data (LSB)	
51	R/L	I	Right/ left selection	Note 1,2
52	V1	I	Gamma voltage level 1	
53	V4	I	Gamma voltage level 4	
54	V7	I	Gamma voltage level 7	
55	V10	I	Gamma voltage level 10	
56	V12	I	Gamma voltage level 12	
57	V13	I	Gamma voltage level 13	
58	AV _{DD}	P	Voltage for analog circuit	
59	GND	P	Power ground	
60	V _{COM}	I	Common voltage	

I: input, O: output, P: Power

Note 1: Selection of scanning mode

Setting of scan control input		IN/OUT state for start pulse				Scanning direction
U/D	R/L	STVD	STVU	STHR	STHL	
GND	V _{CC}	O	I	O	I	Up to down, left to right
V _{CC}	GND	I	O	I	O	Down to up, right to left
GND	GND	O	I	I	O	Up to down, right to left
V _{CC}	V _{CC}	I	O	O	I	Down to up, left to right

Note 2: Definition of scanning direction.
Refer to the figure as below:



2.2. Backlight Unit Section

Pin No.	Symbol	I/O	Function	Remark
1	HI	P	Power supply for backlight unit	Pink
2	GND	P	Ground for backlight unit	White

3. Operation Specifications

3.1. Absolute Maximum Rating

(GND=AV_{SS}=0V, Note 2)

	Symbol	Values		Unit	Remark
		Min.	Max.		
Power voltage	V _{CC}	-0.3	5	V	
	AV _{DD}	-0.5	13.5	V	
	V _{GH}	-0.3	18	V	
	V _{GL}	-15	0.3	V	
	V _{GH} -V _{GL}	-	33	V	
Input signal voltage	V1~V7	0.4 AV _{DD}	AV _{DD} +0.3	V	Note 1
	V8~V14	-0.3	0.6AV _{DD}	V	Note 1
Operation Temperature	T _{OP}	-30	85	°C	
Storage Temperature	T _{ST}	-30	85	°C	

Note 1: AV_{DD} - 0.1 ≥ V1 ≥ V2 ≥ V3 ≥ V4 ≥ V5 ≥ V6 ≥ V7 ≥ V8 ≥ V9 ≥ V10 ≥ V11 ≥ V12 ≥ V13 ≥ V14 ≥ AV_{SS} + 0.1

Note 2: The absolute maximum rating values of this product are not allowed to be exceeded at any times. Should a module be used with any of the absolute maximum ratings exceeded, the characteristics of the module may not be recovered, or in an extreme case, the module may be permanently destroyed.

3.1.1. Typical Operation Conditions

 (GND=AV_{SS}=0V, Note 1)

Item	Symbol	Values			Unit	Remark
		Min.	Typ.	Max.		
Power voltage	V _{CC}	3.0	3.3	3.6	V	
	AV _{DD}	9.8	10	10.2	V	
	V _{GH}	14.3	15	15.7	V	
	V _{GL}	-10.5	-10	-9.5	V	
Input signal voltage	V _{COM}	-	(4.1)	-	V	
	V1~V7	0.4 AV _{VDD}	-	AV _{VDD} -0.1	V	
	V8~V14	0.1	-	0.6 AV _{VDD}	V	
Input logic high voltage	V _{IH}	0.7V _{CC}	-	V _{CC}	V	
Input logic low voltage	V _{IL}	0	-	0.3V _{CC}	V	

 Note 1: Be sure to apply V_{CC} and V_{GL} to the LCD first, and then apply V_{GH}.

3.1.2. Current Consumption

(GND=AV_{SS}=0V)

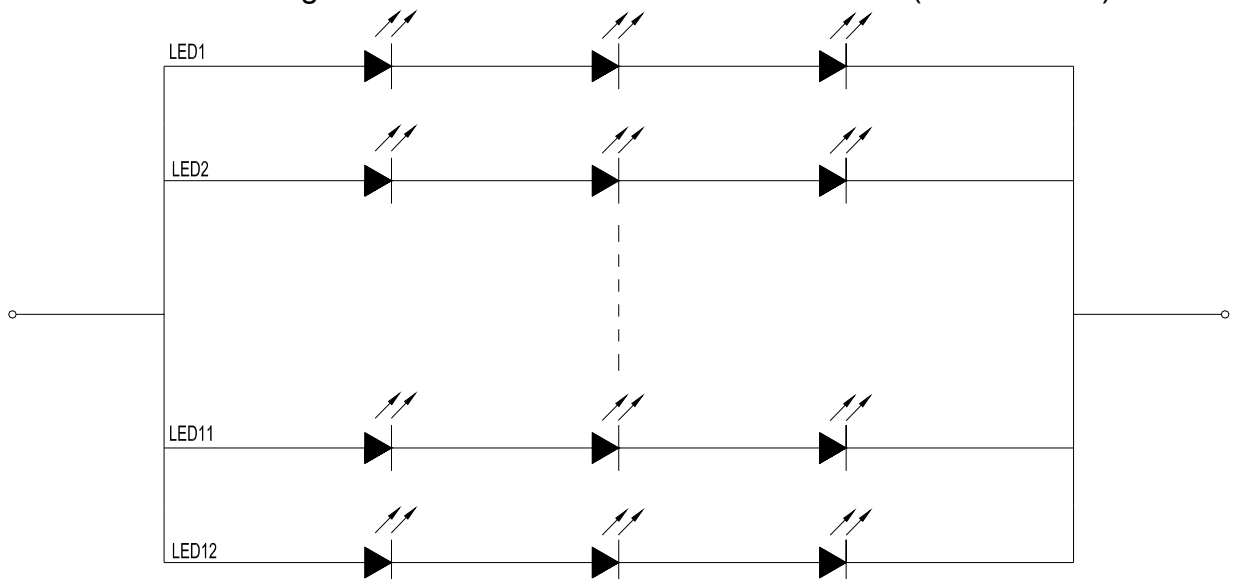
Item	Symbol	Values			Unit	Remark
		Min.	Typ.	Max.		
Current for Driver	I _{GH}	-	0.2	0.5	mA	V _{GH} =15V
	I _{GL}	-	0.2	1.0	mA	V _{GL} = -10V
	I _{CC}	-	4	10	mA	V _{CC} =3.3V
	I _{DD}	-	25	50	mA	AV _{DD} =10V

3.1.3. Backlight Driving Conditions

Item	Symbol	Values			Unit	Remark
		Min.	Typ.	Max.		
LED voltage	V _L	-	9.9	10.5	V	Note 2
LED current	I _L	-	20	-	mA	Note 2
LED life time	-	20,000	-	-	Hr	Note 1

Note 1: The “LED life time” is defined as the module brightness decrease to 50% original brightness that the ambient temperature is 25°C and I_L =20mA.

Note 2: The LED driving condition is defined for each LED module(3 LED Serial).



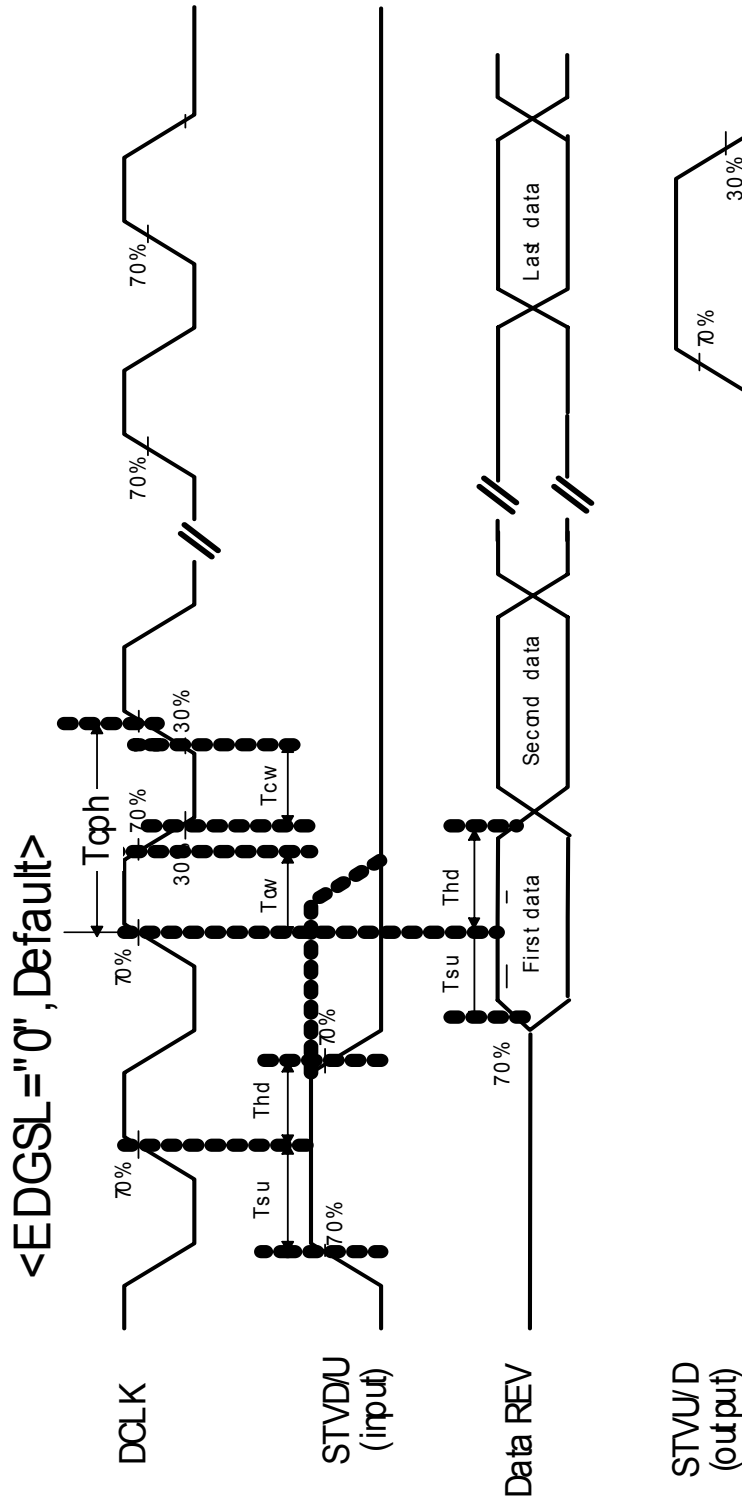
3.2. Timing Characteristics

3.2.1. Timing Conditions

Item	Symbol	Values			Unit	Remark
		Min.	Typ.	Max.		
DCLK frequency	Fclk	-	40	45	MHz	
DCLK cycle	Tcph	22	25	-	ns	
DCLK pulse width	Tcw	8	-	-	ns	
Data set-up time	Tsu	4	-	-	ns	
Data hold time	Thd	2	-	-	ns	
Time that the last data to LD	Tld	1	-	-	Tcph	
Pulse width of LD	Twld	2	-	-	Tcph	
Time that LD to STVD/U	Tlds	5	-	-	Tcph	
POL set-up time	Tpsu	6	-	-	ns	
POL hold time	Tphd	6	-	-	ns	
OEV pulse width	Toev	1	-	-	us	
CKV pulse width	Tckv	0.5	-	-	us	
Horizontal display timing range	Tdh	-	800	-	Tcph	
Horizontal timing range	Th	-	1056	-	Tcph	
DIO2/1 setup time	Tsuv	200	-	-	ns	
DIO2/1 hold time	Thdv	300	-	-	ns	
Horizontal lines per field	Tv	512	525	610	Tdh	
Vertical display timing range	Tvd	-	480	-	Tdh	

3.2.2. Timing Diagram

Timing Diagram1 (CHNSL="1", Default)



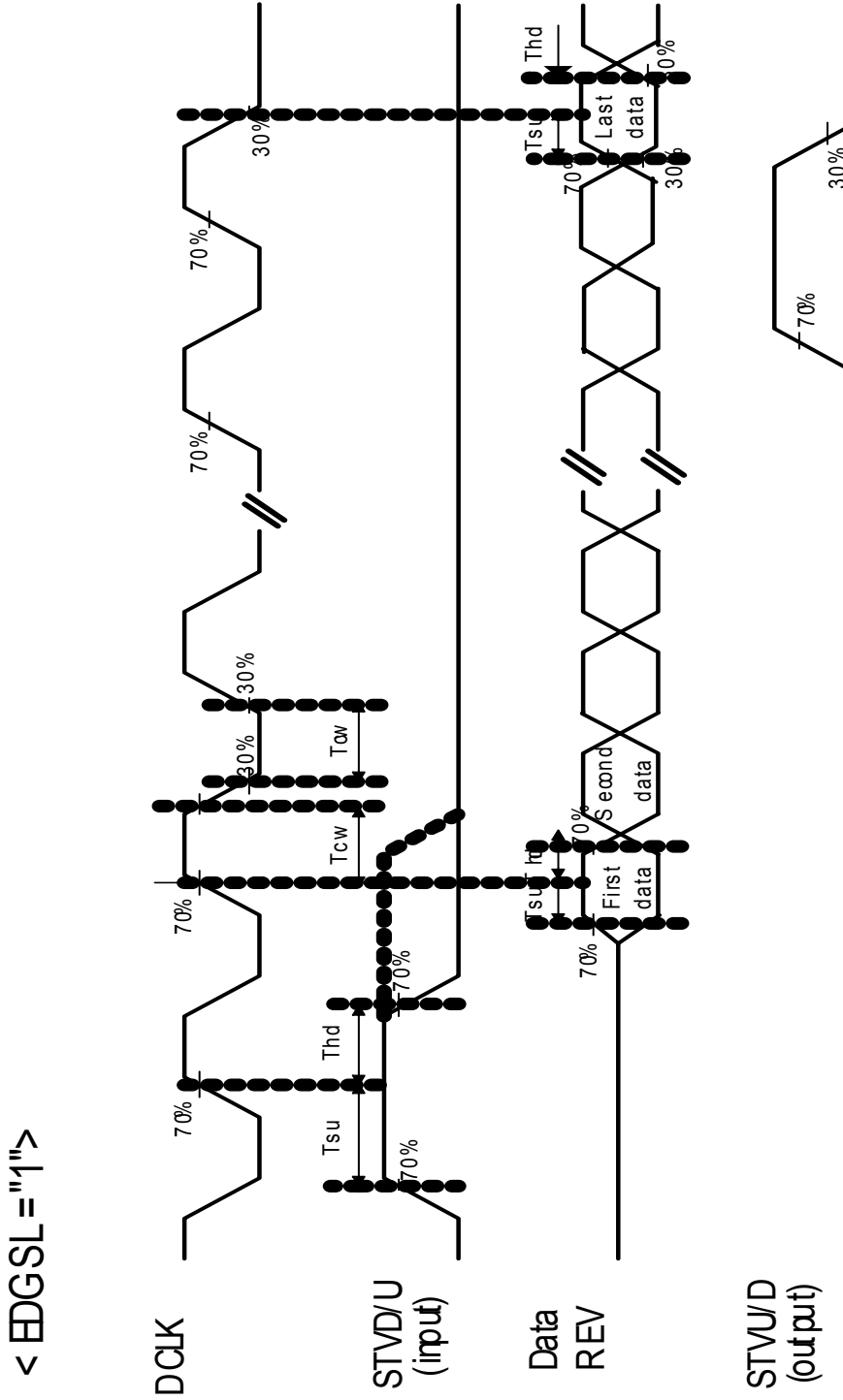


Fig.2-2 operation model 2

Timing Diagram 2

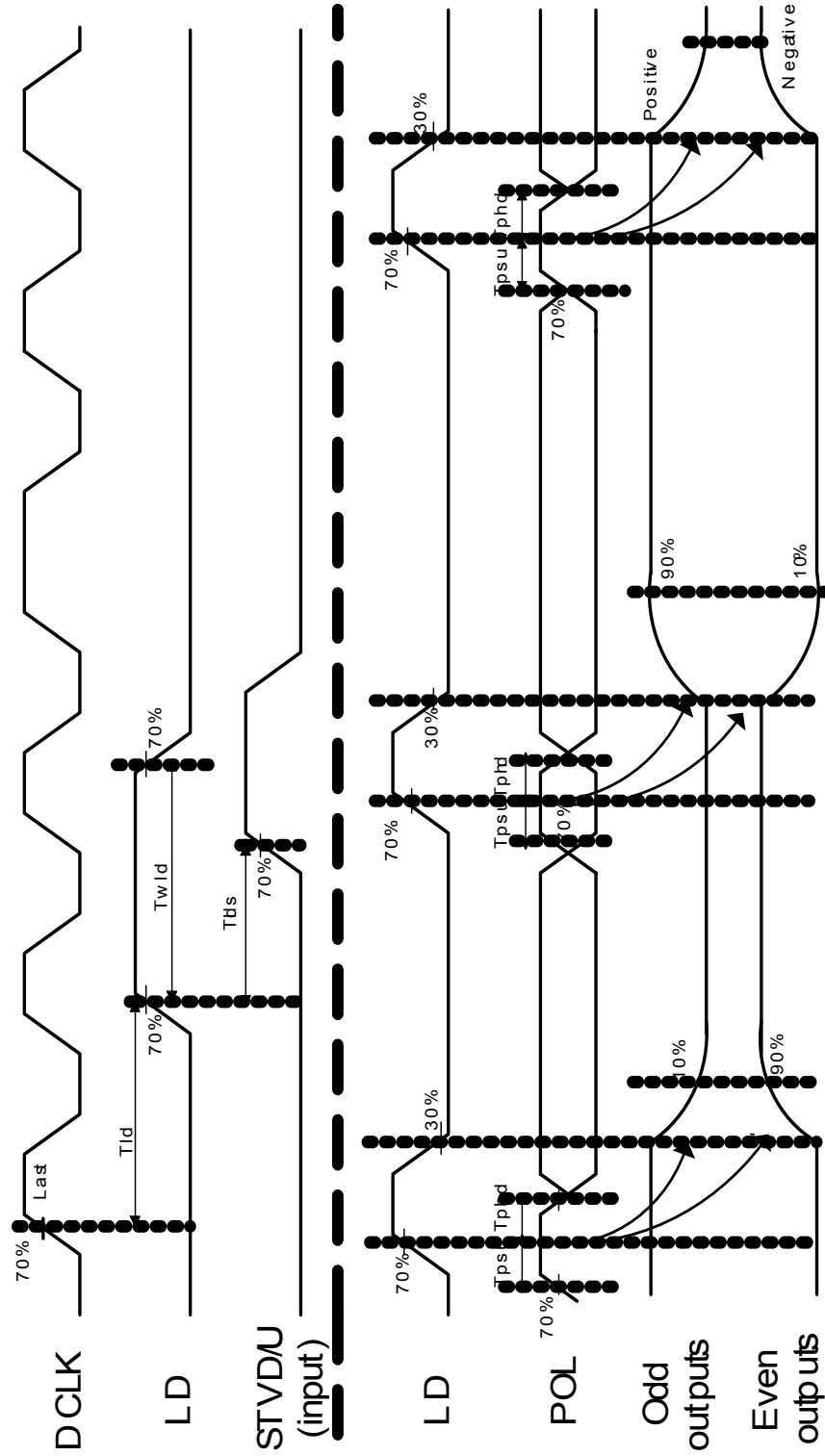


Fig.2-3 Horizontal timing 1

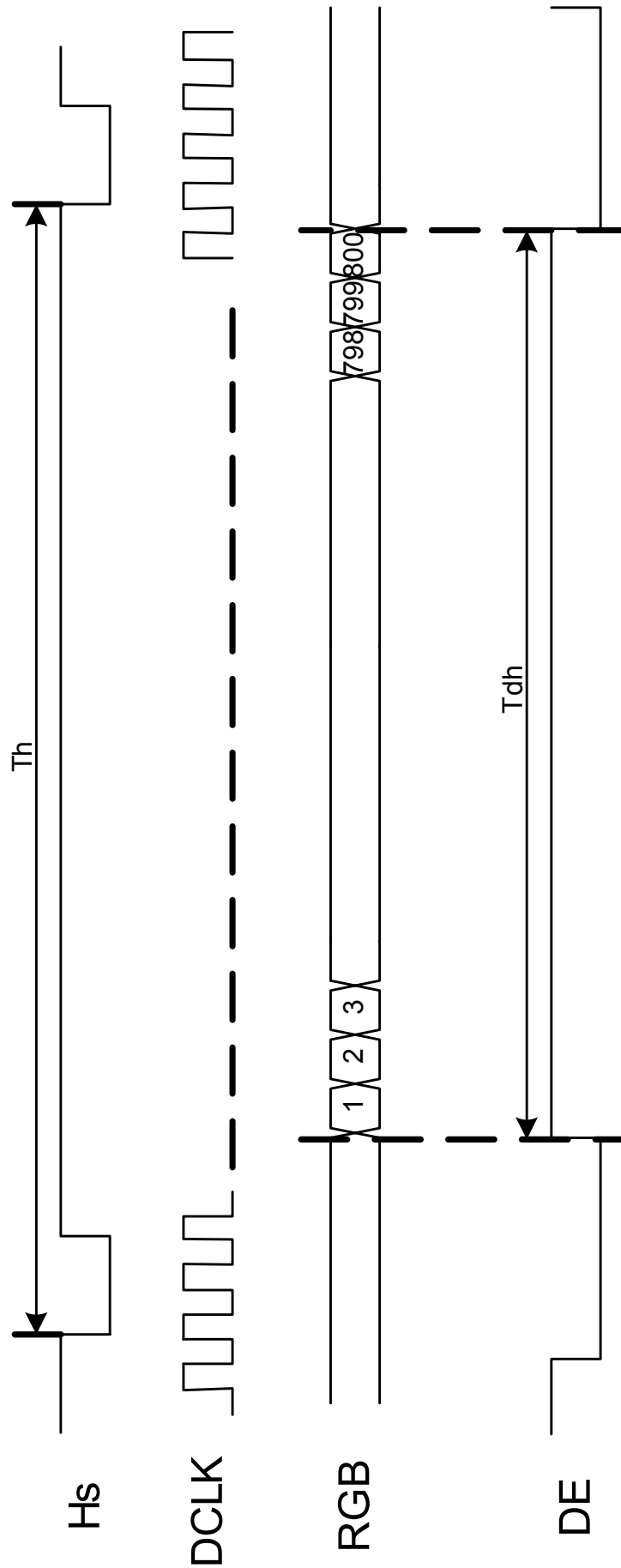


Fig.2-3 Horizontal timing 2

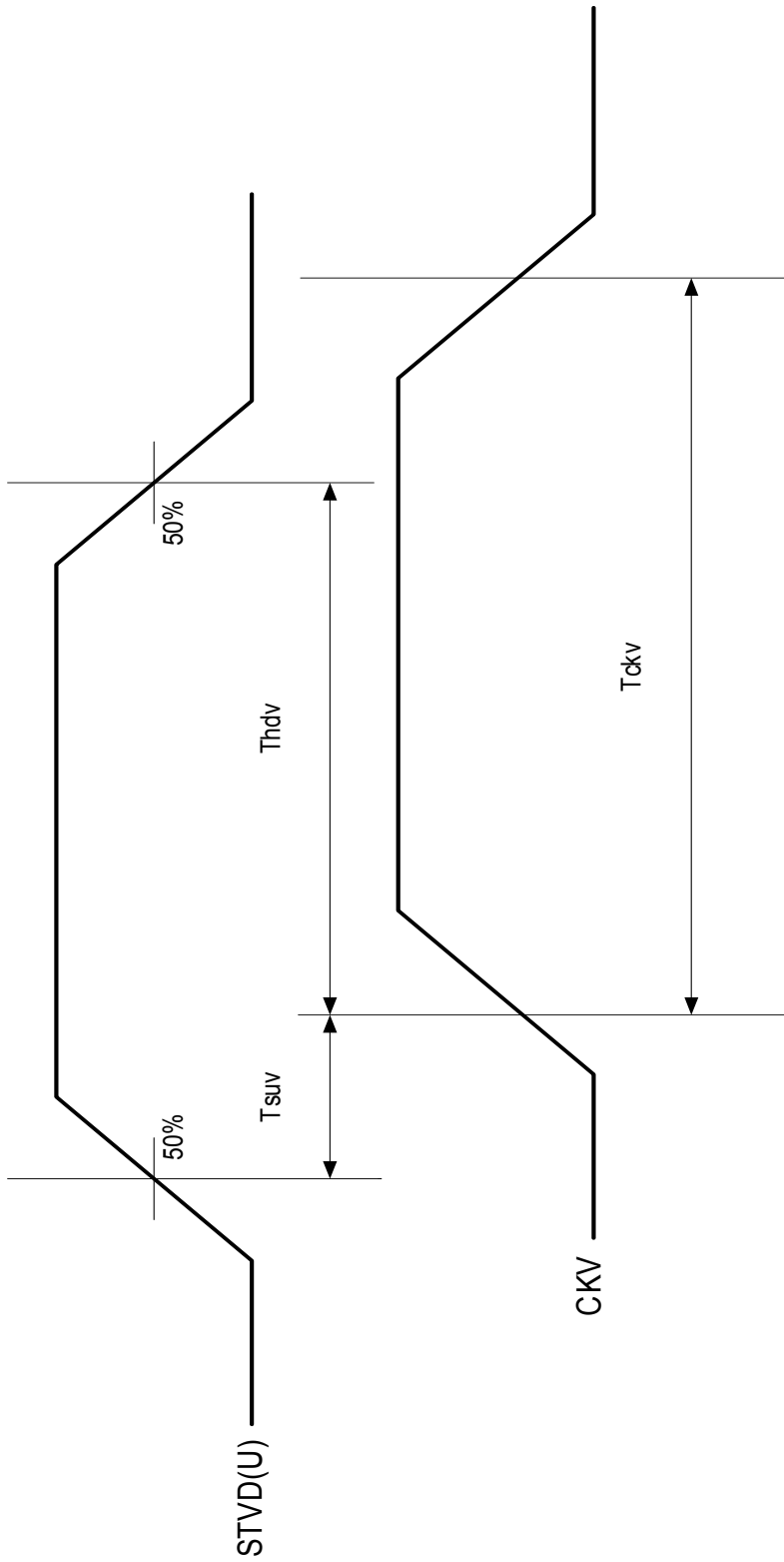


Fig.2-4 Vertical shift clock timing

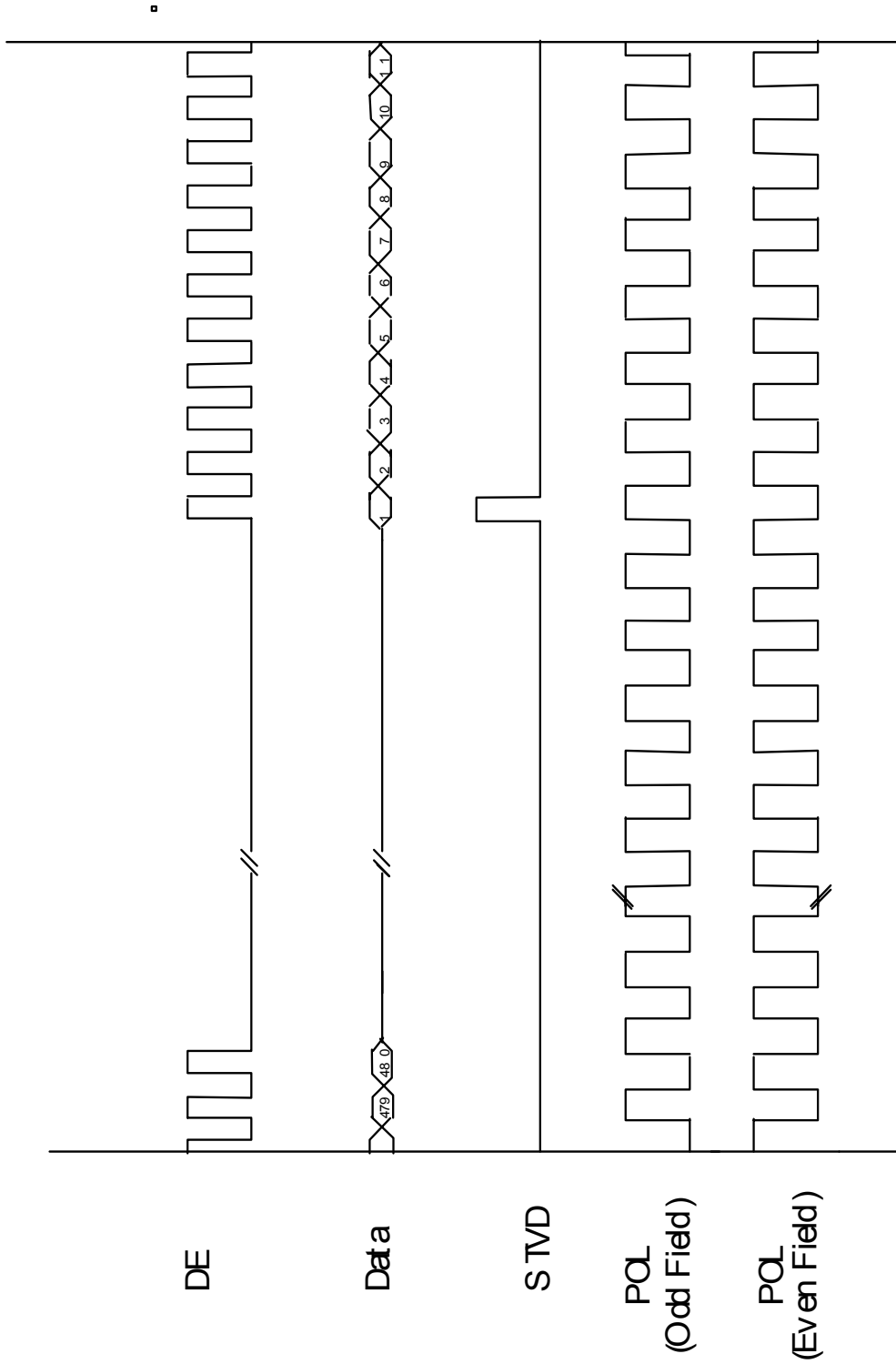


Fig.2-5 Vertical timing (from up to down)

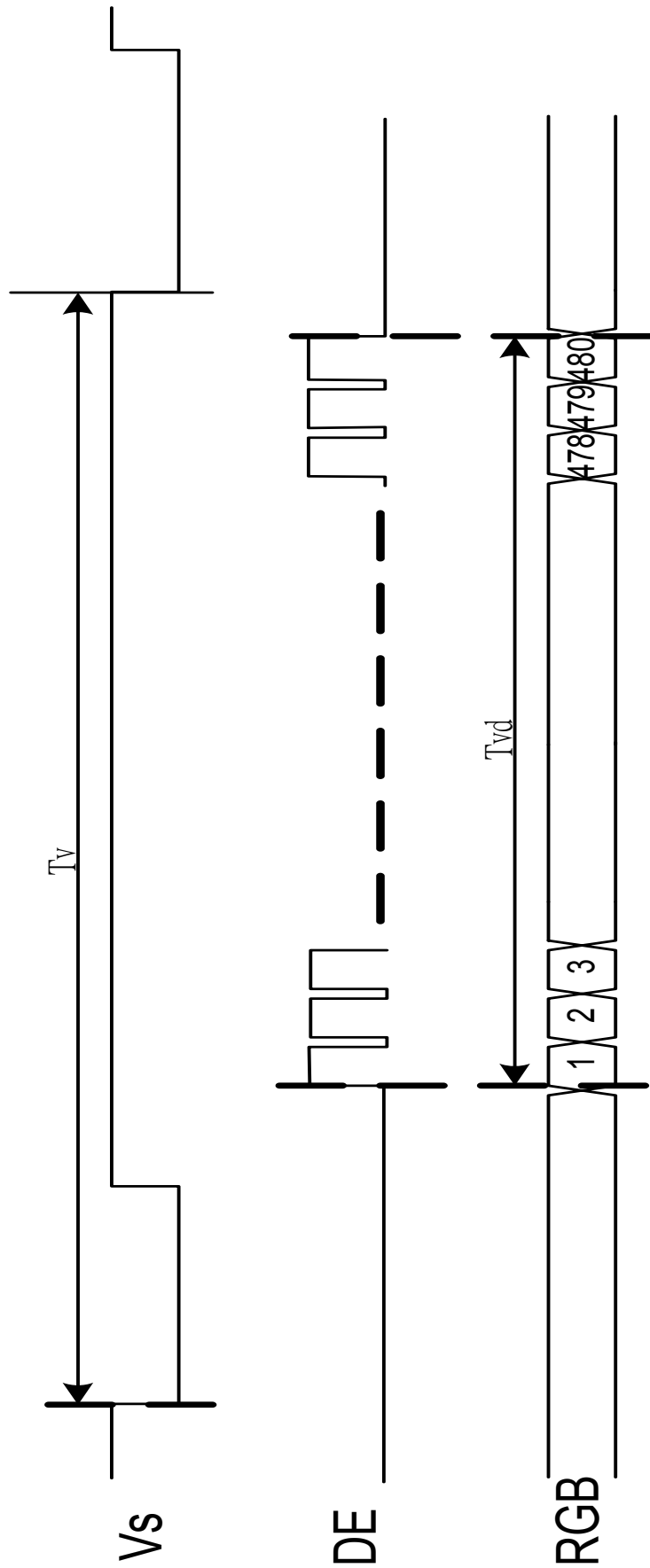


Fig.2-6 Vertical timing

4. Optical Specifications

Item	Symbol	Condition	Values			Unit	Remark
			Min.	Typ.	Max.		
Viewing angle (CR≥10)	θ_L	$\Phi=180^\circ$ (9 o'clock)	55	65	-	degree	Note 1
	θ_R	$\Phi=0^\circ$ (3 o'clock)	55	65	-		
	θ_T	$\Phi=90^\circ$ (12 o'clock)	35	45	-		
	θ_B	$\Phi=270^\circ$ (6 o'clock)	55	65	-		
Response time	T_{ON}	Normal $\theta=\Phi=0^\circ$	-	15	30	msec	Note 3
	T_{OFF}		-	20	40	msec	Note 3
Contrast ratio	CR		250	300	-	-	Note 4
Color chromaticity	W_X		0.26	0.31	0.36	-	Note 2 Note 5 Note 6
	W_Y		0.28	0.33	0.38		
Luminance	L		200	250	-	cd/m ²	Note 6
Luminance uniformity	Y_U		70	75	-	%	Note 7

Test Conditions:

1. $V_{CC}=3.3V$, $I_L=20mA$ rms, the ambient temperature is 25°C.
2. The test systems refer to Note 2.

Note 1: Definition of viewing angle range

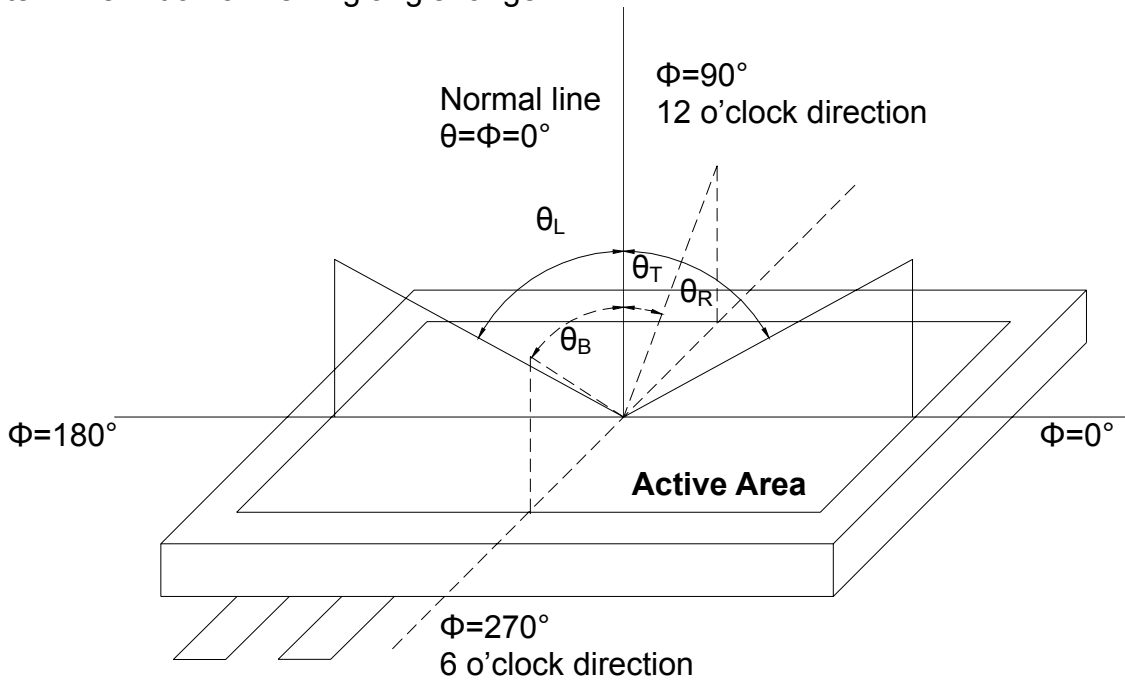


Fig. 4-1 Definition of viewing angle

Note 2: Definition of optical measurement system.

The optical characteristics should be measured in dark room. The optical properties are measured at the center point of the LCD screen. (Response time is measured by Photo detector TOPCON BM-7, other items are measured by BM-5A/Field of view: 1° /Height: 500mm.)

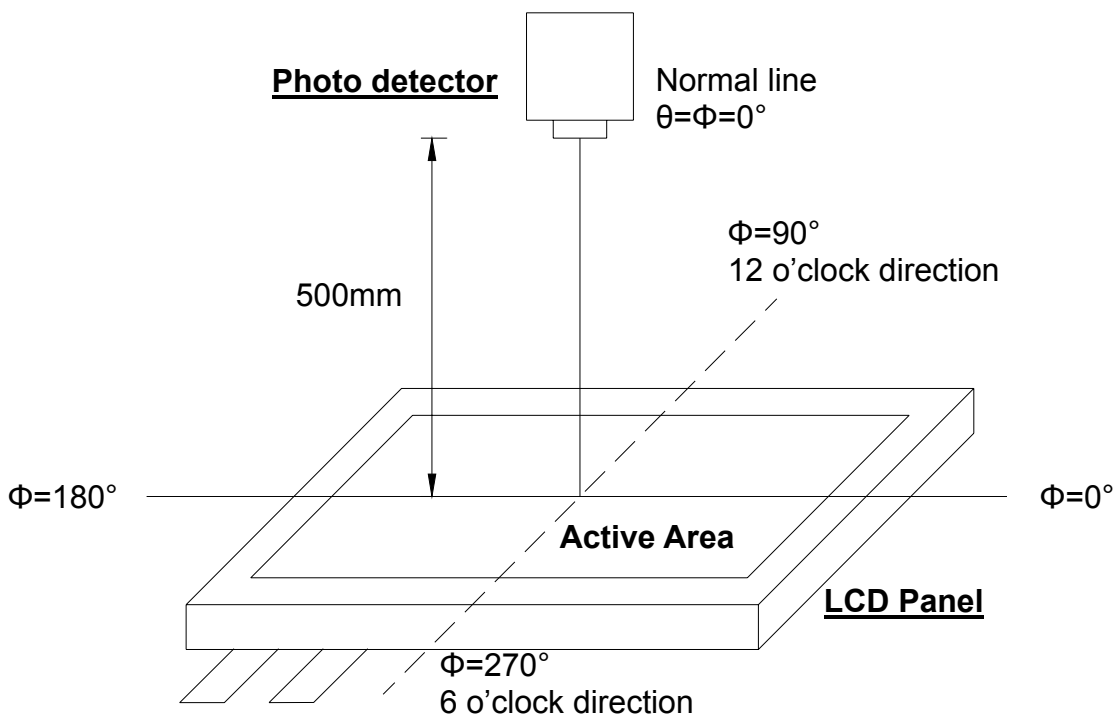


Fig. 4-2 Optical measurement system setup

The copyright belongs to InnoLux. Any unauthorized use is prohibited.

Note 3: Definition of Response time

The response time is defined as the LCD optical switching time interval between "White" state and "Black" state. Rise time (T_{ON}) is the time between photo detector output intensity changed from 90% to 10%. And fall time (T_{OFF}) is the time between photo detector output intensity changed from 10% to 90%.

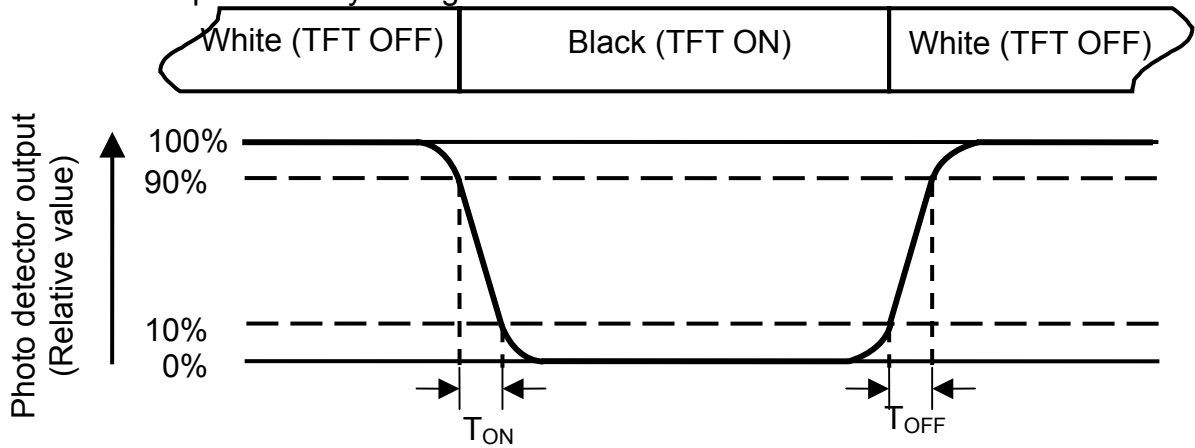


Fig. 4-3 Definition of response time

Note 4: Definition of contrast ratio

$$\text{Contrast ratio (CR)} = \frac{\text{Luminance measured when LCD on the "White" state}}{\text{Luminance measured when LCD on the "Black" state}}$$

Note 5: Definition of color chromaticity (CIE1931)

Color coordinates measured at center point of LCD.

Note 6: All input terminals LCD panel must be ground while measuring the center area of the panel.

Note 7: Definition of Luminance Uniformity

Active area is divided into 9 measuring areas (Refer to Fig. 4-4).Every measuring point is placed at the center of each measuring area.

$$\text{Luminance Uniformity (Yu)} = \frac{B_{min}}{B_{max}}$$

L-----Active area length W----- Active area width

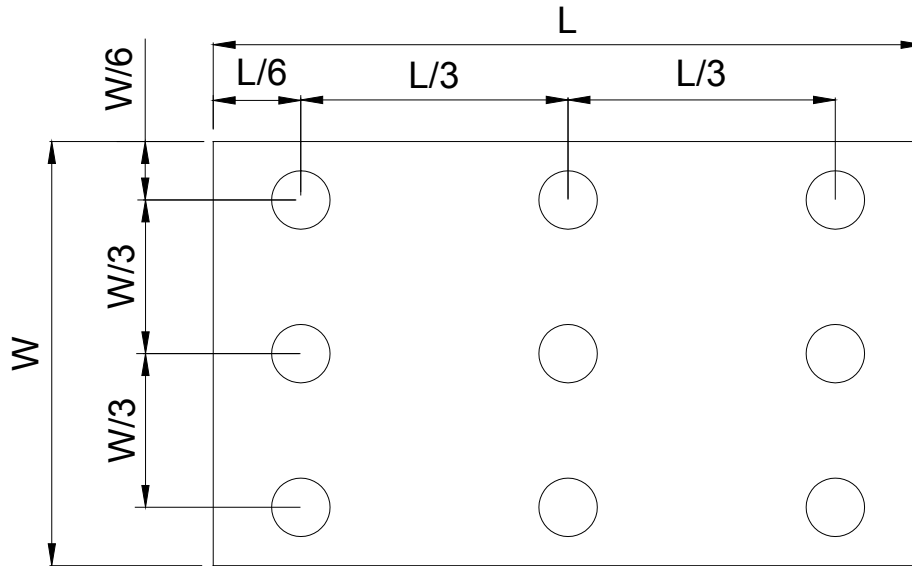


Fig. 4-4 Definition of measuring points

B_{max}: The measured maximum luminance of all measurement position.

B_{min}: The measured minimum luminance of all measurement position.

6. General Precautions

6.1. Safety

Liquid crystal is poisonous. Do not put it in your mouth. If liquid crystal touches your skin or clothes, wash it off immediately by using soap and water.

6.2. Handling

1. The LCD panel is plate glass. Do not subject the panel to mechanical shock or to excessive force on its surface.
2. The polarizer attached to the display is easily damaged. Please handle it carefully to avoid scratch or other damages.
3. To avoid contamination on the display surface, do not touch the module surface with bare hands.
4. Keep a space so that the LCD panels do not touch other components.
5. Put cover board such as acrylic board on the surface of LCD panel to protect panel from damages.
6. Transparent electrodes may be disconnected if you use the LCD panel under environmental conditions where the condensation of dew occurs.
7. Do not leave module in direct sunlight to avoid malfunction of the ICs.

6.3. Static Electricity

1. Be sure to ground module before turning on power or operating module.
2. Do not apply voltage which exceeds the absolute maximum rating value.

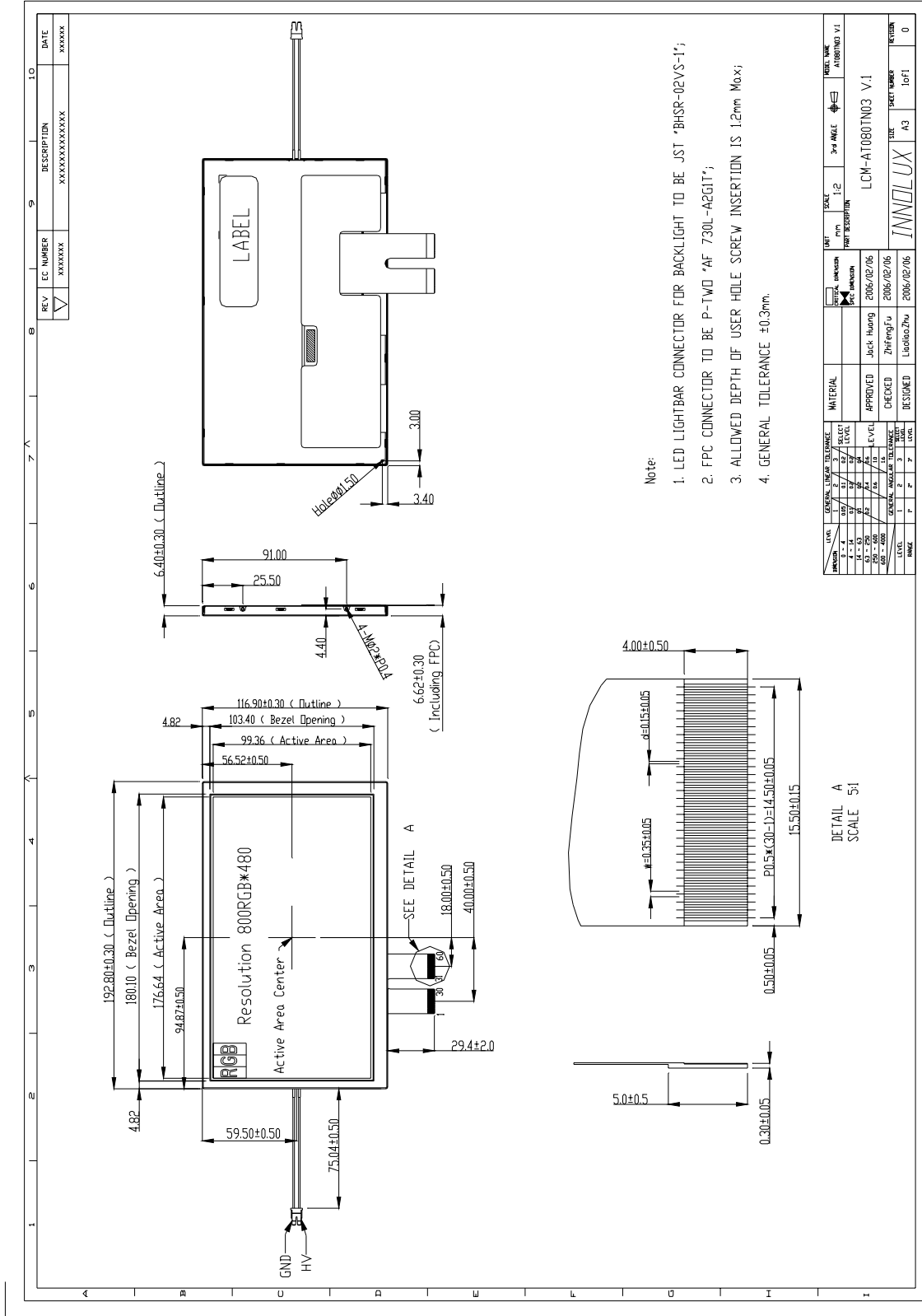
6.4. Storage

1. Store the module in a dark room where must keep at $25\pm 10^{\circ}\text{C}$ and 65%RH or less.
2. Do not store the module in surroundings containing organic solvent or corrosive gas.
3. Store the module in an anti-electrostatic container or bag.

6.5. Cleaning

1. Do not wipe the polarizer with dry cloth. It might cause scratch.
2. Only use a soft sloth with IPA to wipe the polarizer, other chemicals might permanent damage to the polarizer.

7. Mechanical Drawing



REV	EC NUMBER	DESCRIPTION	DATE
▽	XXXXXX	XXXXXXXXXXXXXX	XXXXXX

LEVEL	GENERAL	LEVEL	SCALE	3rd ANGLE	DRAWING	DATE	DESIGNED	CHECKED	APPROVED	MATERIAL	DATE	DESIGNED	CHECKED	APPROVED	MATERIAL
1	LEVEL	1	1:2	3rd ANGLE	DATE	2006/02/06	Luolei.Zhu	ZhangFu	Jack Huang	LCM-AT080TNG3 V.1	2006/02/06	Luolei.Zhu	ZhangFu	Jack Huang	LCM-AT080TNG3 V.1

REV	EC NUMBER	DESCRIPTION	DATE
▽	XXXXXX	XXXXXXXXXXXXXX	XXXXXX

8. Package Drawing

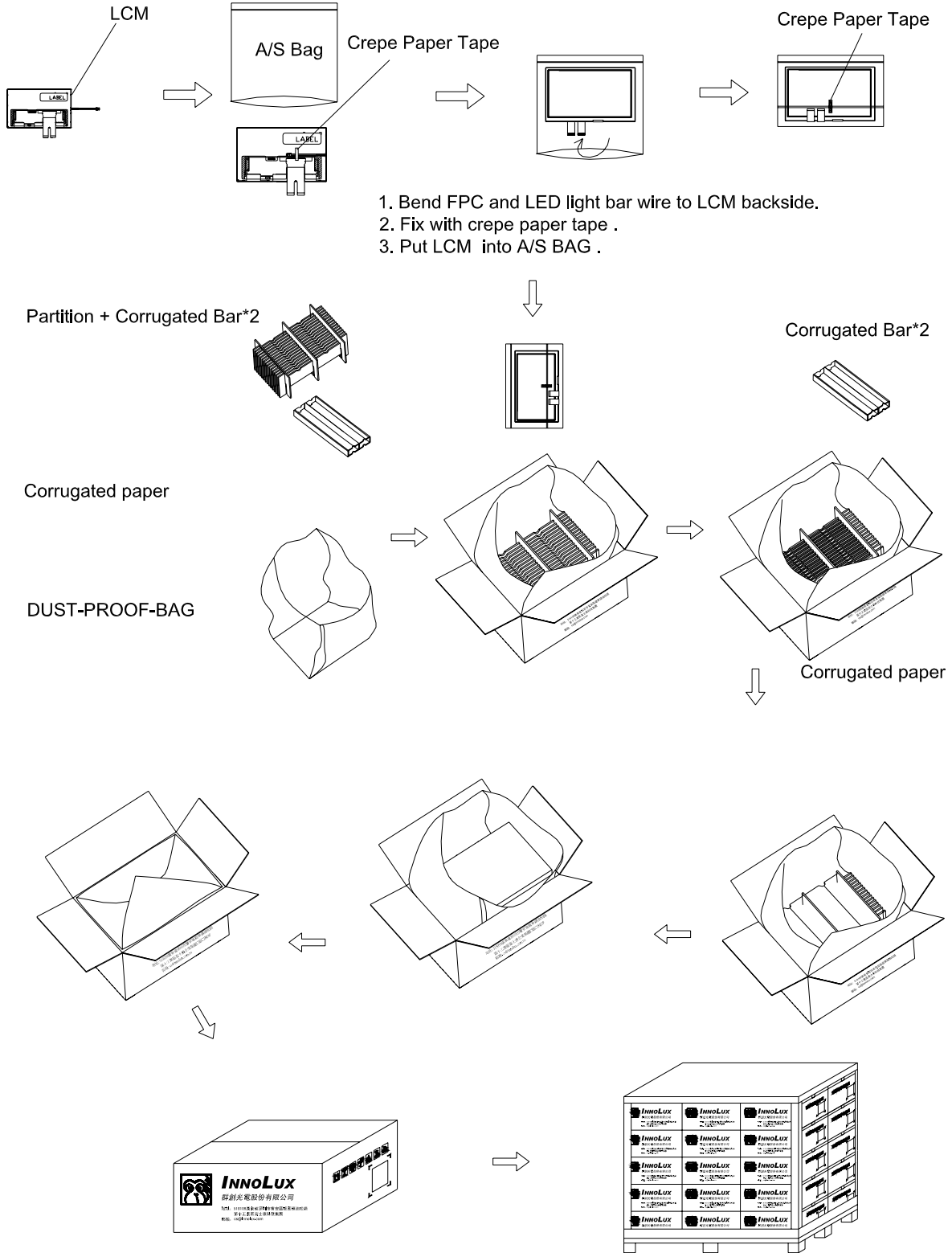
8.1. Packaging Material Table

No.	Item	Model (Material)	Dimensions(mm)	Unit Weight (kg)	Quantity	Remark
1	LCM Module	AT080TN03 V.1	192.8×116.9×6.4	0.2417	30pcs	
2	Partition	BC Corrugated paper	512×349×226	1.161	1set	
3	Corrugated Bar	B Corrugated paper	349X199X52	0.738	4pcs	
4	Dust-Proof Bag	PE	700X530	0.0604	1pcs	
5	A/S Bag	PE	205×195×0.2	0.0029	30pcs	
6	Carton	Corrugated paper	530*355*255	1.100	1pcs	
7	Total weight	12.61Kg				

8.2. Packaging Quantity

Total LCM quantity in Carton: no. of Partition	2 Rows x	quantity per Row	15	= 30
--	----------	------------------	----	------

8.3. Packaging Drawing

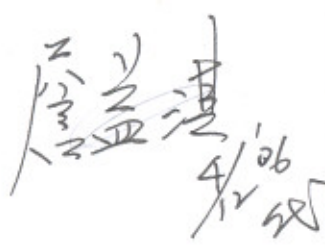

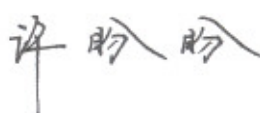


INNOLUX DISPLAY CORPORATION

LCD MODULE SPECIFICATION

Description: 8" LED Driving Board
Type: 102.7mm*10.2mm
Date: 2006/04/11
Version: 01

Preliminary Specification
 Final Specification

Approved by	Reviewed by	Prepared by
 4/12 '06	 4/12 '06	 4/11 '06

Record of Revision

Version	Revise Date	Page	Content
01	2006/4/11		Initial Release.

Contents:

LED Driving Board (102.7*10.2mm).....	1
1. Electrical Characteristics	1
2. Interface Specification	1
2.1 Input Connector (CN1)	1
2.2 Output Connector (CN2).....	2
3. Testing Block Diagram.....	2
4. Mechanical Drawing	3

LED Driving Board (102.7*10.2mm)

1. Electrical Characteristics

1.1 Absolute Maximum Rating

Item	Symbol	Max.	Unit	Remark
Input Voltage	VIN	14	VDC	
Output Voltage		12	VDC	
Output Current	I _f	270	mA	
Operating Temperature	T _{op}	-20~60	°C	
Storage Temperature	T _{stg}	-30~85	°C	
Relative Humidity	RH	90	%	
Dimming Control	V _{dim}	6	VDC	

1.2 Operating Characteristics

Item	Symbol	Min.	Typ.	Max.	Unit	Remark
Input Voltage	VIN	4.5	12	14	VDC	
Output Current	I _f	216	240	264	mA	
Dimming Control	V _{dim}	0.8		1.4	VDC	

2. Interface Specification

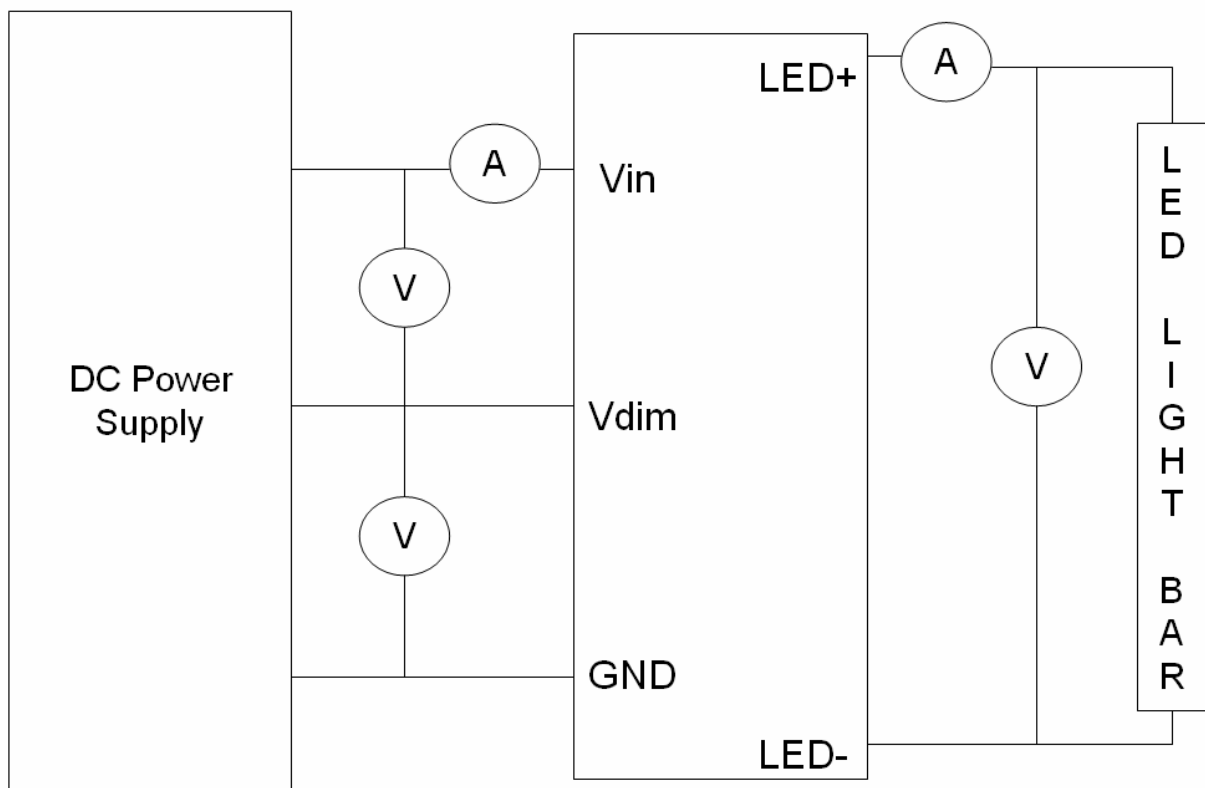
2.1 Input Connector (CN1)

Pin Number	Function	Remark
1	VIN	
2	Dimming Control	
3	GND	

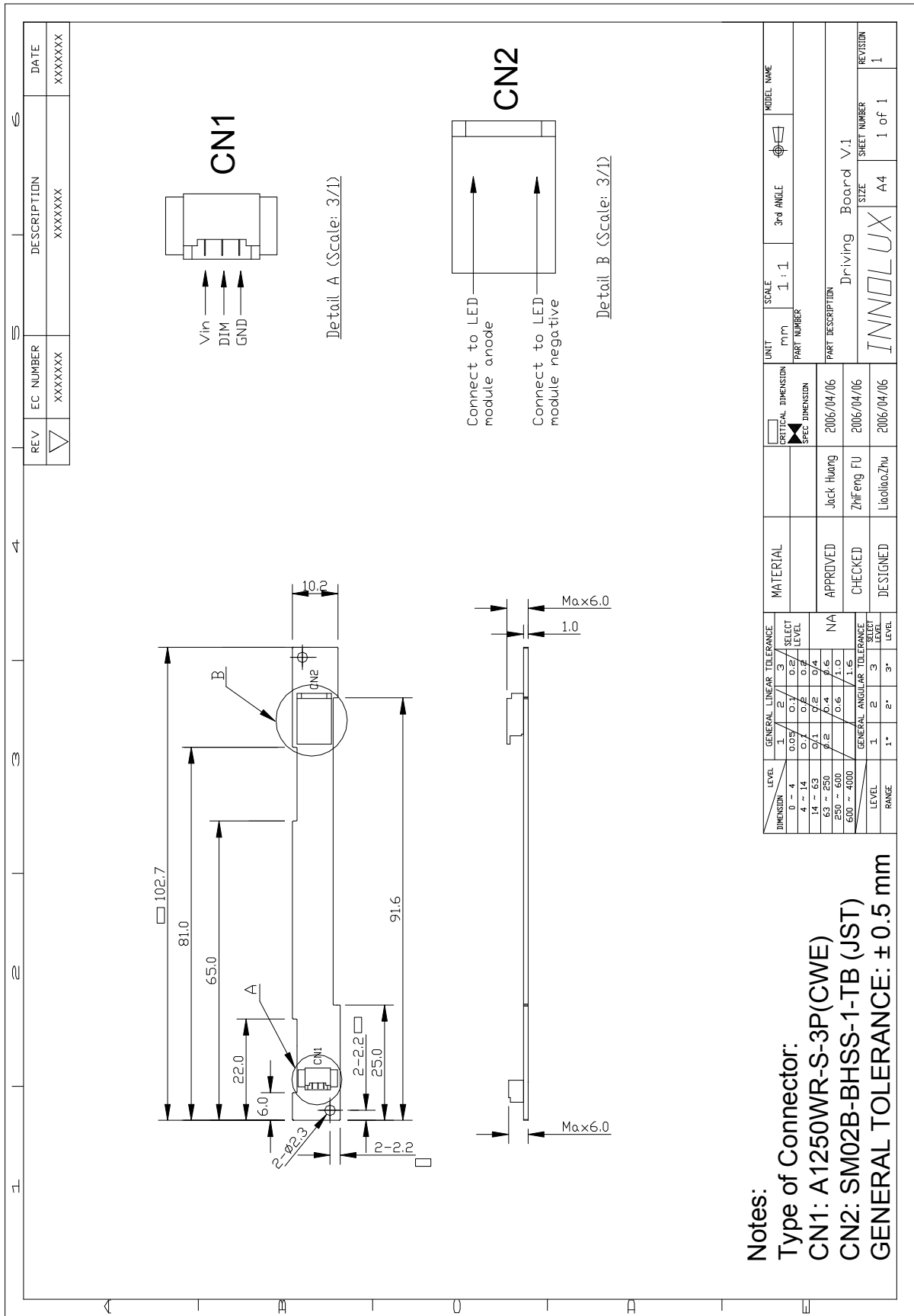
2.2 Output Connector (CN2)

Pin Number	Function	Remark
1	LED HV Output	
2	LED LV Output	

3. Testing Block Diagram



4. Mechanical Drawing

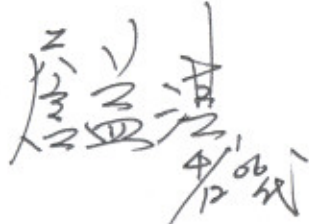
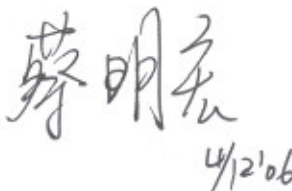
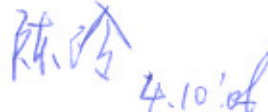


INNOLUX DISPLAY CORPORATION

LCD MODULE SPECIFICATION

Description: 8" T-CON Board
Date: 2006/04/10
Version: 01

- Preliminary Specification
 Final Specification

Approved by	Reviewed by	Prepared by
 张益中 4/12'06	 蔡明 4/12'06	 陈玲 4.10'06

Record of Revision

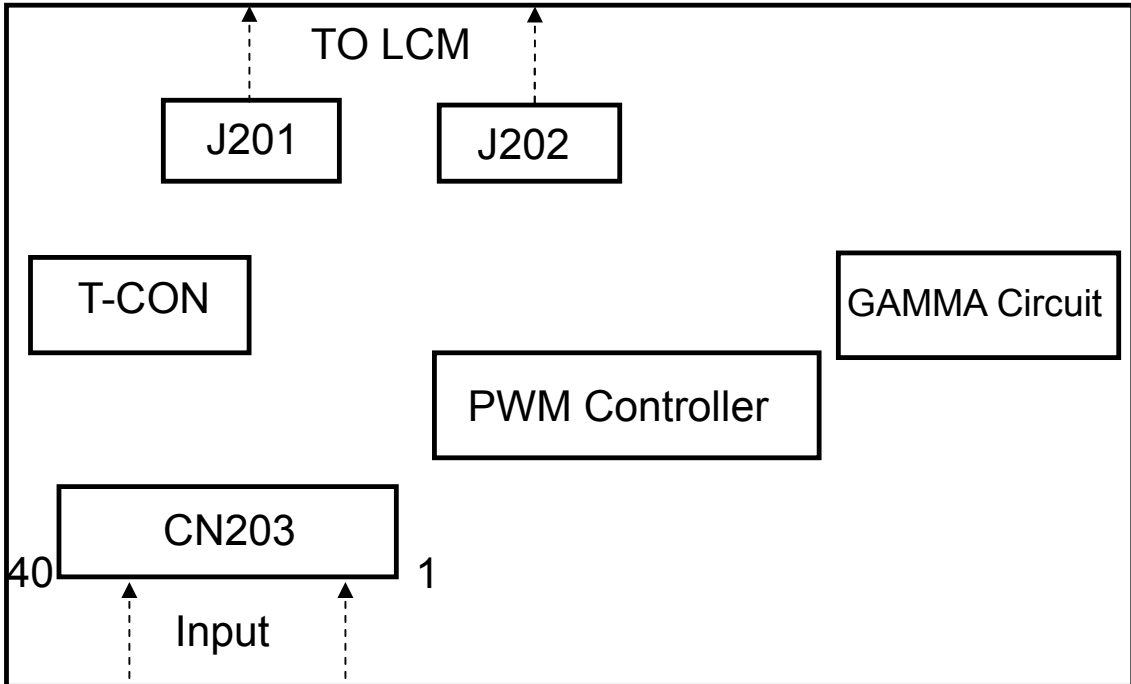
Version	Revise Date	Page	Content
01	2006/04/10		Final specification.

Contents:

Appendix - T-CON Board Specification	1
1.1. T-CON Board Block Drawing	1
1.2. Pin Assignment (Connector 203:F09-40 2R)	2
1.3. Current Consumption	4
1.4. Timing Characteristics	4
1.4.1. Timing Conditions	4
1.4.2. Timing Diagram	5
1.5. Mechanical Drawing (T-CON Board)	6

Appendix - T-CON Board Specification

1.1. T-CON Board Block Drawing



1.2. Pin Assignment (Connector 203:F09-40 2R)

(Note)

Pin No.	Symbol	I/O	Function	Remark
1	GND	P	Power ground	
2	GND	P	Power ground	
3	NC		NC	
4	VCC	I	Power supply for digital circuit(3.3V)	Note1
5	VCC	I	Power supply for digital circuit(3.3V)	Note1
6	VCC	I	Power supply for digital circuit(3.3V)	Note1
7	VCC	I	Power supply for digital circuit(3.3V)	Note1
8	NC		NC	
9	DE	I	Date enable	
10	GND	P	Power ground	
11	GND	P	Power ground	
12	GND	P	Power ground	
13	BI5	I	Blue data input (MSB)	
14	BI4	I	Blue data input	
15	BI3	I	Blue data input	
16	GND	P	Power ground	
17	BI2	I	Blue data input	
18	BI1	I	Blue data input	
19	BI0	I	Blue data input(LSB)	
20	GND	P	Power ground	

21	GI5	I	Green data input(MSB)	
22	GI4	I	Green data input	
23	GI3	I	Green data input	
24	GND	P	Power ground	
25	GI2	I	Green data input	
26	GI1	I	Green data input	
27	GI0	I	Green data input(LSB)	
28	GND	P	Power ground	
29	RI5	I	Red data input(MSB)	
30	RI4	I	Red data input	
31	RI3	I	Red data input	
32	GND	P	Power ground	
33	RI2	I	Red data input	
34	RI1	I	Red data input	
35	RI0	I	Red data input(LSB)	
36	GND	P	Power ground	
37	GND	P	Power ground	
38	DCLK	I	Sample clock	
39	GND	P	Power ground	
40	GND	P	Power ground	

Note: I: input, O: output, P: Power

Note1: Typ. Vcc=3.3V, Min. Vcc=3.0V, Max. Vcc=3.6V

1.3. Current Consumption

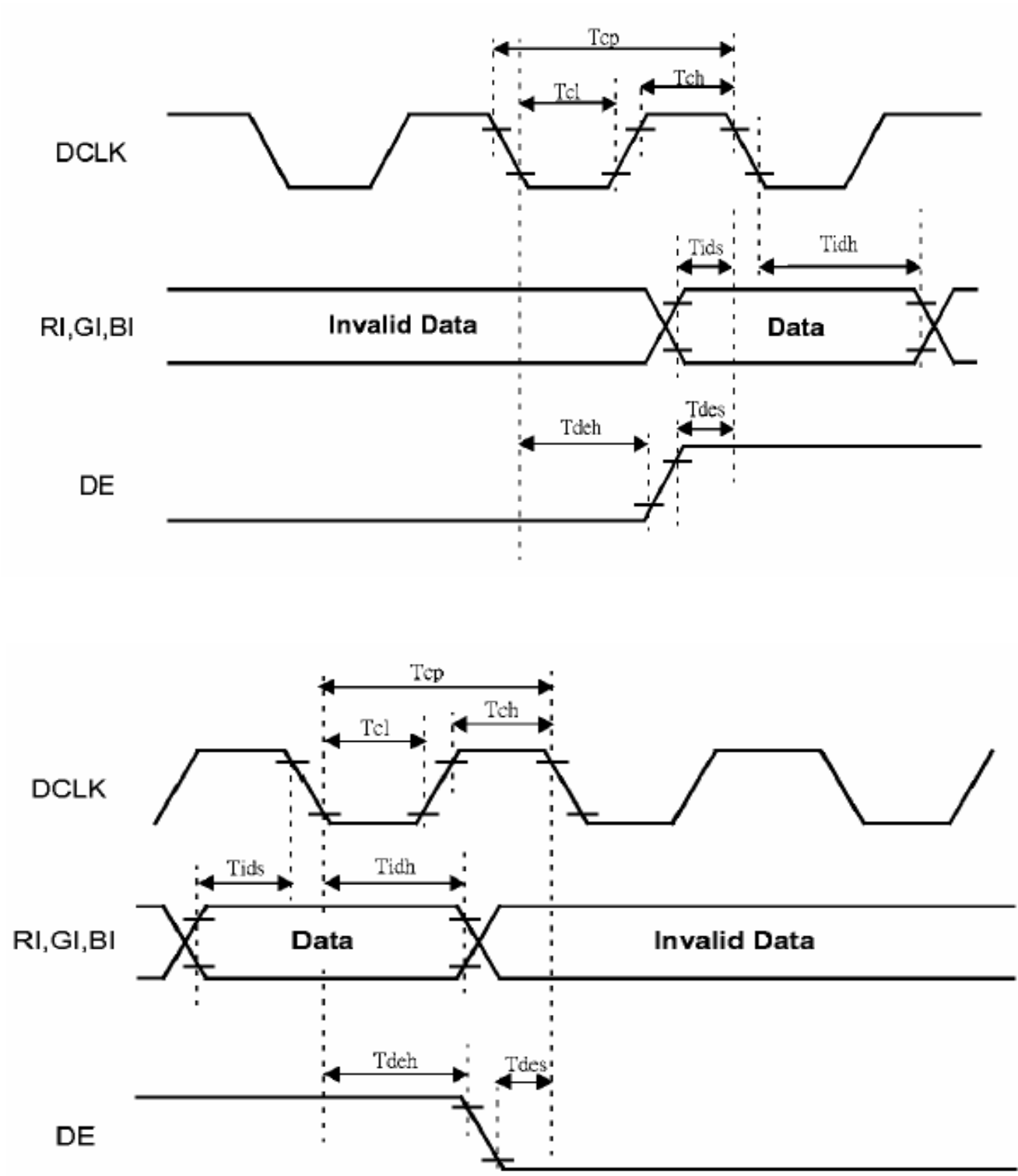
Item	Symbol	Values			Unit	Remark
		Min.	Typ.	Max.		
Current for Driver	I _{vcc}	200	230	280	mA	V _{VCC} =3.3V

1.4. Timing Characteristics

1.4.1. Timing Conditions

Item	Symbol	Values			Unit	Remark
		Min.	Typ.	Max.		
DCLK frequency	F _{dclk}	-	40	45	MHz	
DCLK cycle	T _{cp}	22	25	-	ns	
DCLK high time	T _{ch}	0.3	-	-	T _{cp}	
DCLK low time	T _{cl}	0.3	-	-	T _{cp}	
RGB input data setup time	T _{ids}	5	-	-	ns	
RGB input data hode time	T _{idh}	10	-	-	ns	
DE setup time	T _{des}	5	-	-	ns	
DE hold time	T _{deh}	10	-	-	ns	

1.4.2. Timing Diagram



1.5. Mechanical Drawing (T-CON Board)

